



**LAKEDALE**  
COMMUNICATIONS

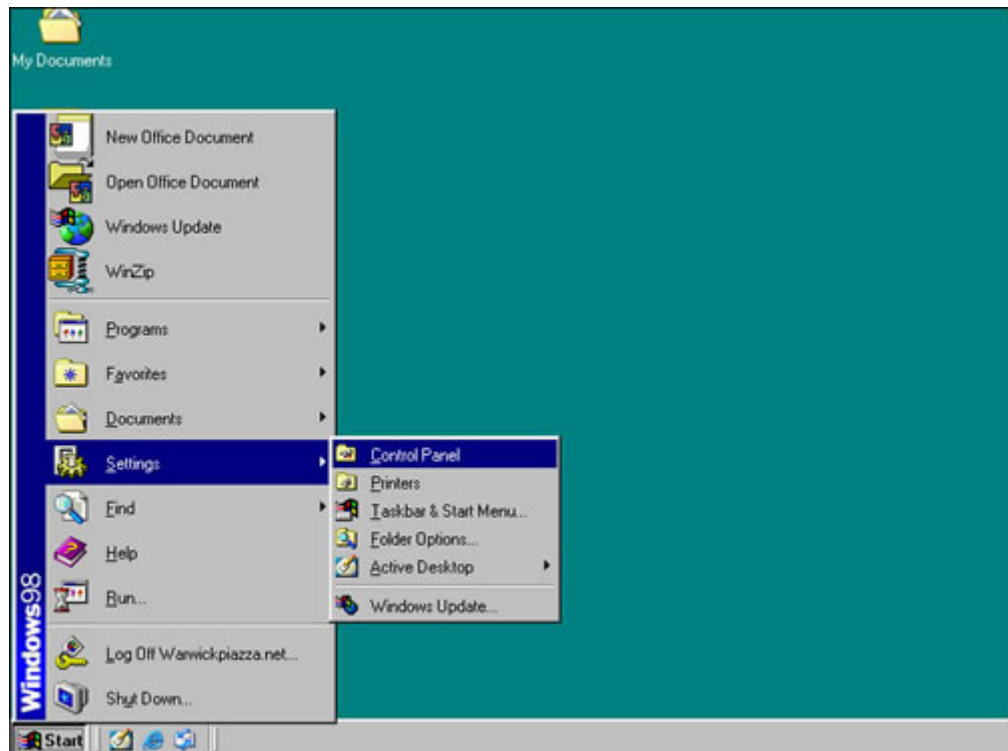
## High-Speed Internet & E-mail Setup Instructions for Windows 2000

If, after you have read this entire document, you are still having difficulties with the installation, please contact Lakedale's Internet Help Desk at:

<b>320-274-9800</b>	<b>Annandale, Maple Lake, and South Haven</b>
<b>320-243-9800</b>	<b>Paynesville</b>
<b>763-675-9800</b>	<b>Buffalo, Montrose, Rockford, Twin Cities, and Waverly</b>
<b>877-535-3375</b>	<b>Toll-Free</b>

**Technical Support 24 / 7**

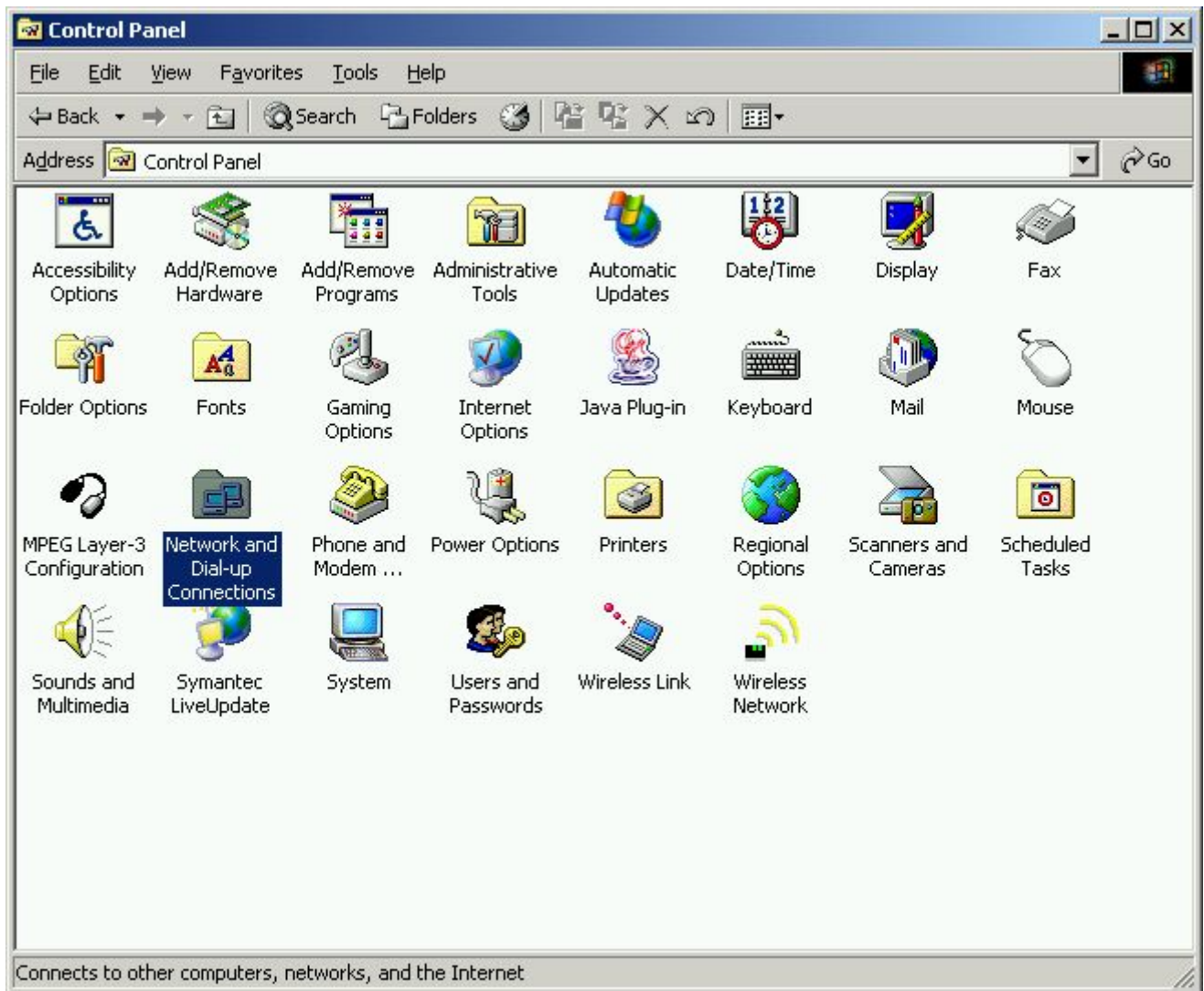
1. Click the **Start** Menu in the lower left hand corner, go to **Settings** and then **Control Panel**.



## High-Speed Internet & E-mail Setup Instructions for Windows 2000

---

2. In the **Control Panel**, click on **Network and Dial-up Connections**.



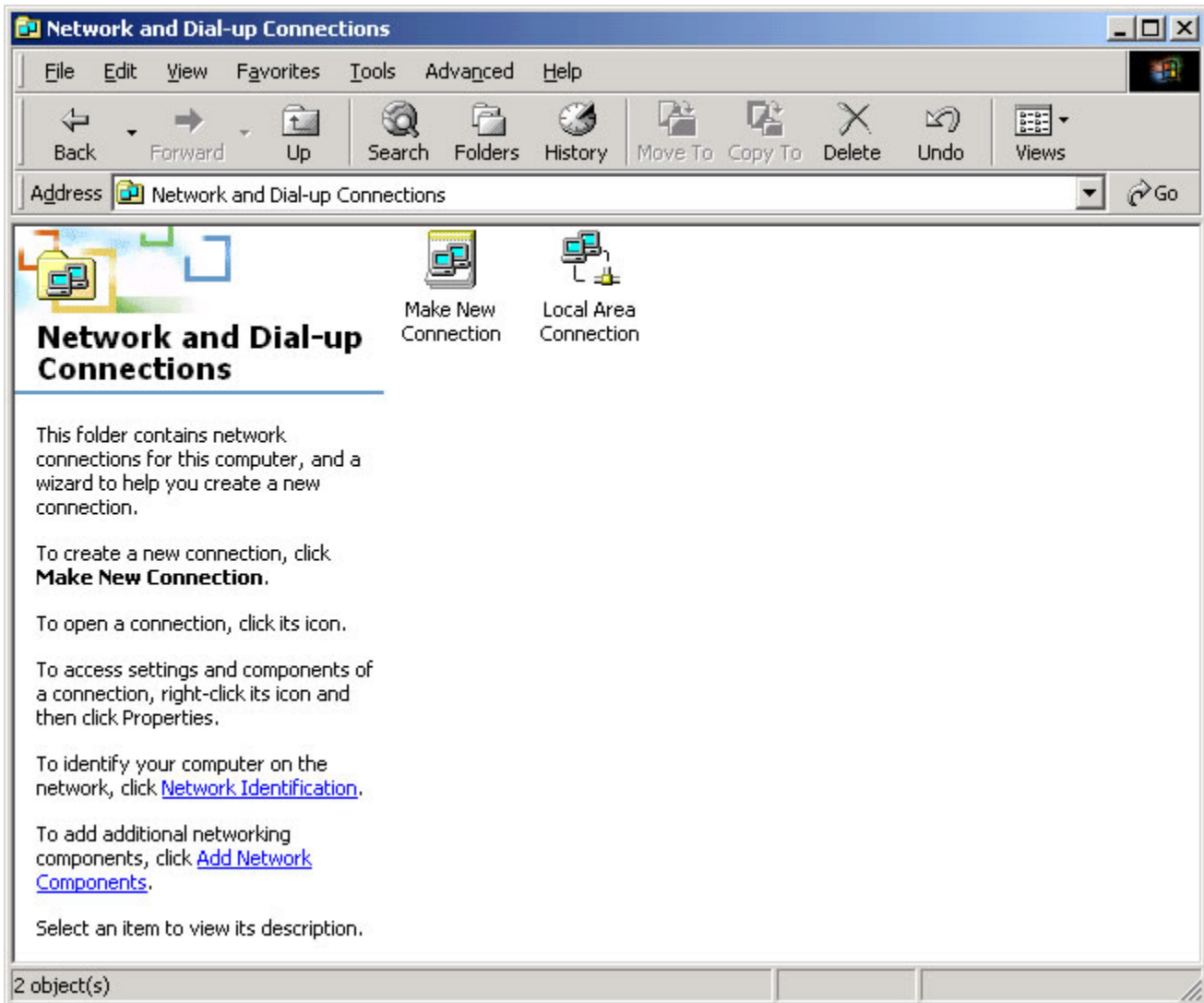
## High-Speed Internet & E-mail Setup Instructions for Windows 2000

---

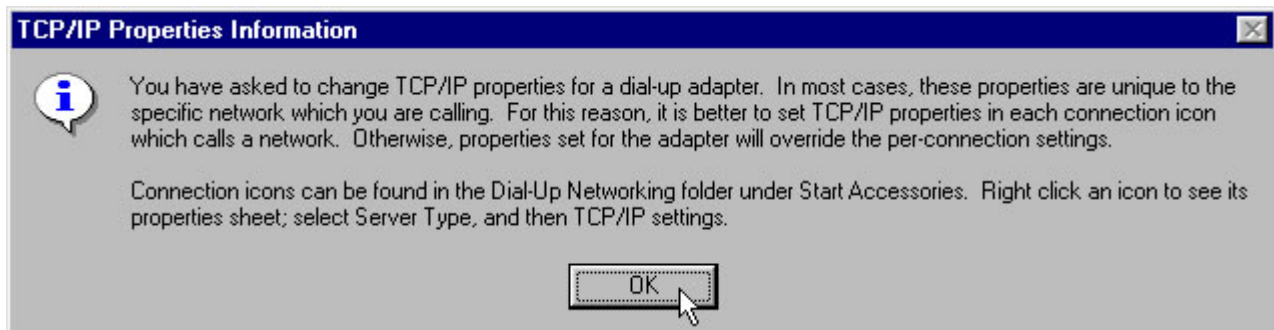
3. Locate your connection.

Right-click on **Local Area Network Connection**.

Then click on **Properties**.



4. You might see the following box asking if you are sure you want to access this. Click **OK**.



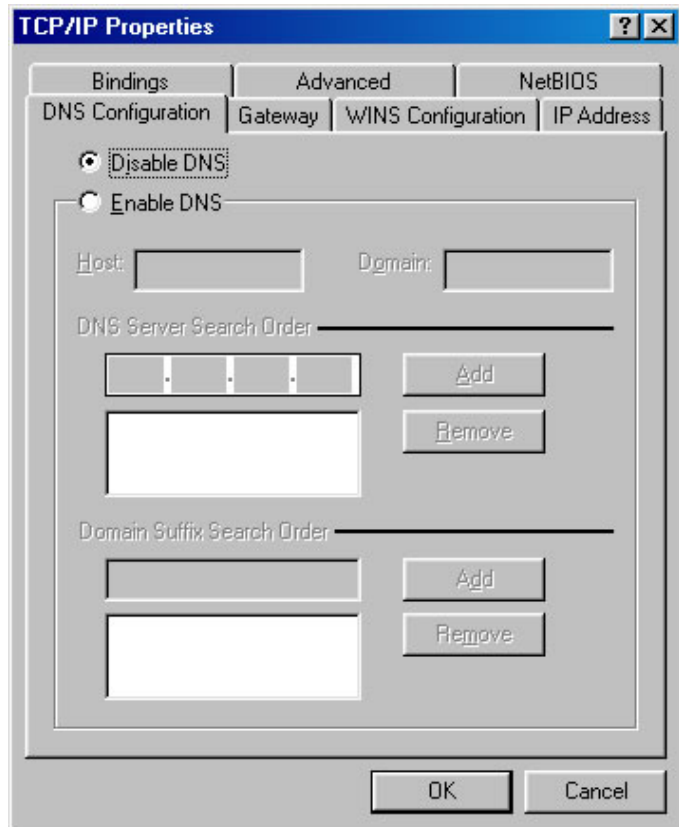
## High-Speed Internet & E-mail Setup Instructions for Windows 2000

5. Under the **Configuration** tab, you'll see "The following network components are installed."

Locate **Internet Protocol (TCP/IP)** and click once to highlight it. Then click **Properties**.



6. Click on the **DNS Configuration** tab. Make sure that there is a dot in **Disable DNS**.



7. Click the **OK** buttons until you exit all the windows. Reboot your computer, and you are ready to connect to the Internet!

## E-mail Setup Instructions

### Outlook Express – To add an E-mail Account:

If you are using Outlook Express for the first time, you may get a connection wizard when you open the program. Follow the instruction in the wizard. **Note:** at the beginning of the wizard, it may ask you if you want to open a new account or use an existing account. You want to use an existing account. Fill in the questions in each window with the information provided by Lakedale and click **N**ext. **When the installation is complete, click Finish.**

1. Open **Outlook Express**. On the **T**ools menu, click **A**ccounts.
2. Click on the **m**ail tab.
3. In the **I**nternet Accounts dialog box, click on **A**dd button.
4. Select **M**ail to open the Internet Connection Wizard, and then follow the instructions to establish a connection with a mail server.
5. Display Name: (Your Real Name e.g., John Smith). Click, **N**ext.
6. Choose I already have an e-mail address I'd like to use. Type in your e-mail address provided by Lakedale (e.g., example@lakedalelink.net). Click, **N**ext.
7. The incoming mail server type is a **POP3** server. The incoming mail (POP3) is: **pop3.lakedalelink.net** (in small, lowercase letters). The outgoing mail (**SMTP**) is: **smtp.lakedalelink.net** (in small, lowercase letters). Click **N**ext.
8. Type in your **A**ccount **N**ame. It's your e-mail address (e.g., example@lakedalelink.net). Put in your password. If you type in your password here and select **R**emember **P**assword, you won't have to enter it each time you try to check your mail. Click **N**ext. Click **F**inished.
9. After you click **finished**, you will return to the **I**nternet **A**ccounts dialogue box. Make sure your new account is highlighted. On the right side of the box, select the **P**roperties button.
10. Click on the **S**ervers tab. Put a check mark in the box to the left of **M**y **s**erver **r**equires **a**uthentication. Click **S**ettings.
11. Select **L**og **o**n **u**sing. In the **A**ccount **n**ame field, type in the first part of your e-mail address hyphen lakedalelink (e.g., example-lakedalelink).
12. In the **P**assword **n**ame field, type in your password and put a check mark in the box to the left of **R**emember **p**ass**w**ord. Click **O**K.
13. Click on the **A**dvanced tab. In the **O**utgoing **m**ail (**S**SMTP) field, type in **587**. Click **O**K.
14. You are now **finished**. Click **C**lose.

To learn how to use your e-mail program, click on **H**elp on the tool bar at the top of the Outlook Express window. Click on Contents and Index. In this help window, you may read on how to use all of the functions of Outlook Express mail.

### E-mail Setup Instructions *(continued)*

#### Netscape Messenger E-mail – Using the Mail Setup Program:

If you have just installed Messenger or have yet to set your preferences for sending and receiving mail, you will be prompted to use the Mail & Newsgroups setup program (Windows and Mac OS (only) when you first open your Inbox. *Note: Lakedale no longer offers Newsgroups.*

The setup program asks you to provide settings for required preferences. If you do not know a setting, you must exit the program and consult Lakedale's Help Desk. You can always change these settings later by choosing Preferences from the Edit menu and selecting the Mail & Newsgroup Preferences category.

#### To use the Mail Setup Program:

1. Be sure to type the following information exactly as it's given to you. Match uppercase and lowercase characters. Click Forward or Back to move through the panels. To cancel your changes click the window's close box.
  - Your username on the mail server. Same as your **E-mail Address**.
  - Your password for the mail server. Same as your **Account Password**.
  - Your reply-to or return address. Your return address is usually your username combined with your site and domain names (e.g., helpdesk@lakedalelink.net).
  - Your real name: Netscape Messenger includes it with your username when you send a message. (Hint: Put your name here how you would write it on any application, e.g., John Smith.)
  - The incoming mail server is a **POP3** server. The incoming mail (POP3) is: **pop3.lakedalelink.net** (in small, lowercase letters).
  - The outgoing mail (**SMTP**) is: **smtp.lakedalelink.net** (in small, lowercase letters).
  
2. Click **OK**.

You are finished. To learn how to use your e-mail program, click on **Help** on the tool bar at the top of the Netscape window. Click on Help Contents. In this Help window you may read on how to use all of the functions of Netscape Messenger.